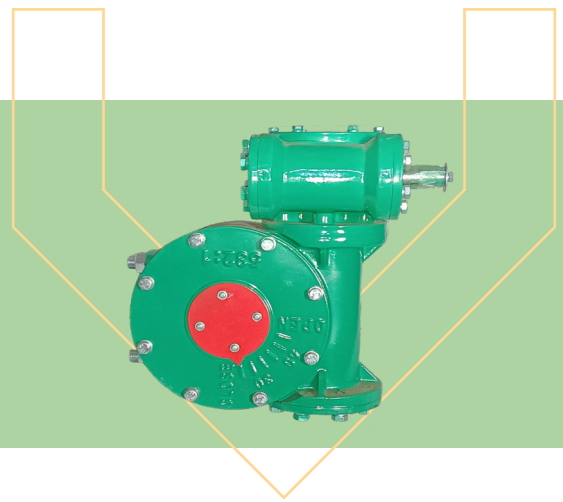


Gearbox Spares for Butterfly Valves

Weights: 3kg - 43kg
Sizes: DN 50 – 600
Pressure: PN16
Temperatures: -10°C to 120°C



Application

Butterfly valve gearboxes operate and control the opening and closing of butterfly valves. With interchangeable EPDM and Nitrile liners, Valvetech is able to offer its customers the right gearbox spares for Butterfly Valves, their configuration, and setup to suit every industry need.

Valvetech's gearbox spares for Butterfly Valves are designed to efficiently transmit torque and motion from the actuator or handwheel to the valve disc, allowing for precise regulation of fluid flow.

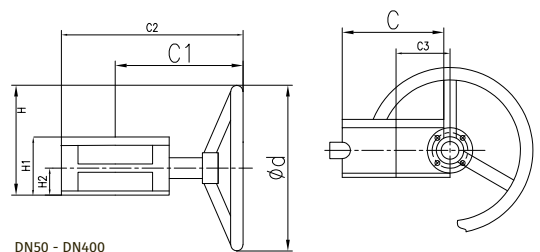
The distinctive design of butterfly valves, with a flat, circular disc positioned within the pipe, offers low-pressure drop and quick on-off capabilities. The gearbox enhances this functionality by providing the necessary mechanical advantage to smoothly rotate and position the disc. They offer reliability, compactness, and ease of maintenance, making them suitable for applications ranging from water treatment plants to HVAC systems, and even in the oil and gas industry.

The selection of the appropriate gearbox depends on factors such as the valve size, operating conditions, and required control precision, ensuring seamless and efficient fluid flow management across diverse sectors.

Dimensions

DN50 - DN400

| NPS | DN | C | H | H1 | H2 | C1 | C2 | C3 | φd |
|-----------|-----|-----|-----|----|----|-----|-----|-----|-----|
| 2" - 6" | 50 | 125 | 98 | 62 | 29 | 142 | 195 | 45 | 140 |
| 8" - 10" | 200 | 165 | 170 | 78 | 37 | 196 | 280 | 64 | 270 |
| 12" - 14" | 300 | 185 | 173 | 78 | 39 | 180 | 315 | 78 | 270 |
| 16" | 400 | 260 | 238 | 99 | 53 | 245 | 373 | 108 | 380 |

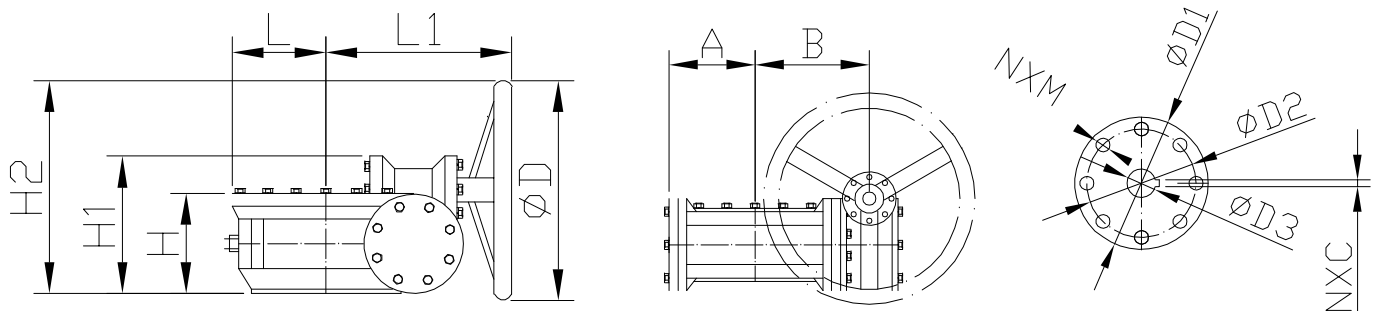


DN50 - DN400

DN50 - DN400

| NPS | DN | A | B | L | L1 | φd | H | H1 | H2 | φD1 | φD2 | φD3 | NXM | NXC |
|-----|-----|-----|-----|-----|-----|-----|-----|-----|-----|-----|-----|-------|---------------|--------|
| 16 | 400 | 112 | 162 | 105 | 235 | 263 | 105 | 150 | 240 | 200 | 159 | φ33.5 | 4 x M18 ; 90° | 10 |
| 18 | 450 | 112 | 162 | 105 | 235 | 263 | 105 | 150 | 240 | 200 | 159 | φ38.4 | 4 x M18 ; 90° | 10 |
| 20 | 500 | 112 | 162 | 105 | 235 | 263 | 105 | 150 | 240 | 200 | 159 | φ41.5 | 4 x M18 ; 90° | 10 |
| 24 | 600 | 152 | 211 | 135 | 295 | 380 | 127 | 175 | 315 | 285 | 216 | φ50.8 | 4 x M20 ; 90° | 16 |
| 28 | 700 | 164 | 229 | 148 | 330 | 380 | 135 | 213 | 350 | 300 | 254 | φ63.5 | 8 x M16 ; 90° | 2 x 18 |

Diagrams



DN400 - DN700